

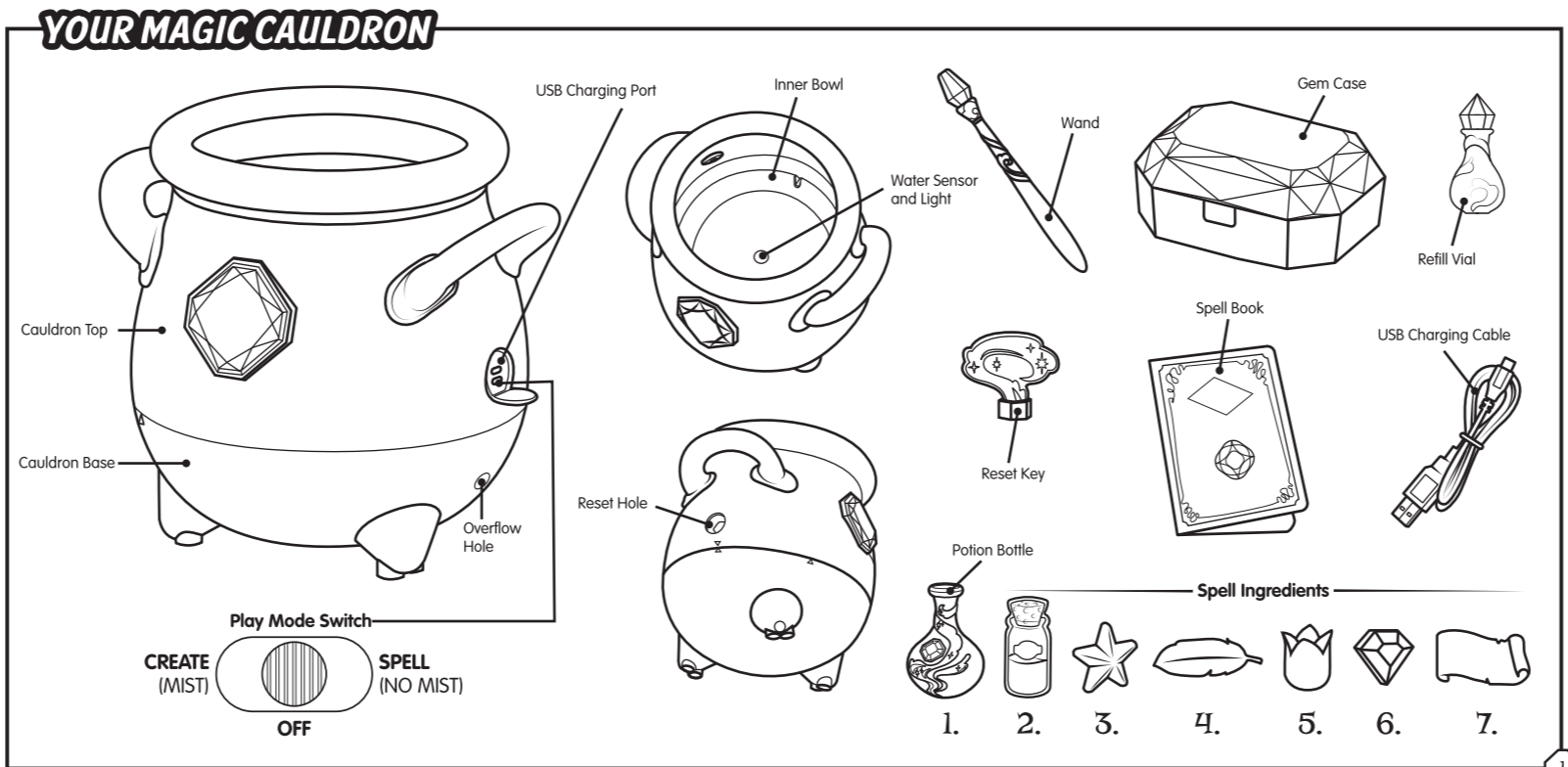
CONTENTS

Magic Cauldron	Page
Your Magic Cauldron	1
Charging Your Cauldron	2
2 Ways To Play!	3
Create Mode (Mist)	4-7
The Magic Reveal!	8
Emptying Your Cauldron	9
Create Mode (Mist) - Repeat Play	10-11
Resetting Your Cauldron	12
Spell Mode (No Mist)	13
Cauldron Sleep Mode	14
Mist Refill	15
Troubleshooting - Cauldron	16
Magic Mixie	
Your Magic Mixie	17
Batteries	18
Energy Level	19
Magic	20-23
Nurturing	24
Sleeping	25
Troubleshooting - Magic Mixie	26

SCAN FOR AN EASY HOW-TO VIDEO:

 PARENTAL CONSENT REQUIRED BEFORE COMING ONLINE AND VIEWING ONLINE CONTENT.

ADULT TO REMOVE ALL TIES BEFORE PLAYING FOR THE FIRST TIME.



CHARGING YOUR CAULDRON

Your Cauldron is equipped with a Lithium Ion battery that is non-replaceable.

When the Cauldron battery is low, the red light next to the charging port will flash, and a 'low battery' sound will play. All play functions will be disabled until the battery is charged. Use the USB Charging Cable to charge your Cauldron*. Open the side cover on the Cauldron and plug the Micro-USB end into the charger port. Plug the USB-A end into a USB2.0-compatible port. For best results, use a USB2.0 charger that plugs into a wall socket. The red light next to the charging port will stay on until the battery is fully charged. Charge time is approximately 2 hours. When the light turns off, take the charger out, close the side cover and continue playing with your Cauldron.

* USB Charging Cable included. Works with all standard USB Charging Adapters (not included).

BATTERY INSTRUCTIONS:

- The rechargeable batteries are only to be charged by an adult or by children of at least 8 years old.
- Never leave Cauldron unattended while charging battery.
- Charge battery in an isolated area away from flammable materials.
- Disconnect USB Charging Cable when unit is fully charged.
- There is a risk of the batteries exploding, overheating, or igniting. Do not disassemble, modify, heat, or short circuit the battery. Do not place unit or battery in fires, leave them in hot places, or in direct sunlight.

BATTERY REMOVAL CONSIDERATIONS:

- The Lithium Ion battery is factory installed, and is not intended to be removed for the usable life of the product. The battery should only be removed by an adult when you intend to dispose of the product, and recycle the battery.
- Removal must only be performed by an adult.
- Use care to avoid cutting, puncturing, tearing, deforming, or otherwise damaging the battery housing during removal.
- Product must be turned off before attempting to remove the battery.
- Once battery is removed, place tape over exposed wire / contact points to avoid accidental short circuits.

For information on how to remove battery, visit <https://www.moosetoys.com/battery-disposal>

2 Ways To Play!

Use the Play mode switch to choose how to play!

Create Mode (Mist):
 This mode will allow you to create your own Magic Mixie*! Select this mode if you want to reveal your Magic Mixie again or other items placed in the Gem Case.

Spell Mode (No Mist):
 Make additional spells in your Cauldron without the magical reveal.

*When purchased, unit will be set to "Create Mode".

Create Mode (Mist)

Parent/Guardian to read the following instructions while child follows along using the Spell Book.

Only add 1 Spell Ingredient for each step*

Prompting

- The Cauldron will prompt you when the light glows green and you hear "tap, tap, tap". This means you're ready to move to the next step by tapping the rim of the Cauldron 3 times with your Wand.
- When done correctly, you'll hear a celebratory sound and see the light flash quickly indicating the Cauldron has moved to the next step of your spell.

*Note: Only use approved Magic Mixie supplied materials.

ADD WATER #1

Fill the Potion Bottle once to the Fill Line and pour into the top of your Cauldron. The Cauldron will come to life with bubbling and boiling sounds.

Only apply one full Potion Bottle of water.
 When you hear the "tap tap tap" prompt, tap the rim of the Cauldron 3 times with your Wand.

SOUND DUST #2

The orchestral sound indicates it's time to add the Sound Dust.

Pour this into the Cauldron and stir with your Wand to dissolve. Tap Cauldron 3 times with your Wand when prompted.

SHIMMER STAR #3

The Shimmer sound and white light indicate it's time to add the Shimmer Star.

Drop the Star into the Cauldron and stir with your Wand to dissolve. Tap Cauldron 3 times with your Wand when prompted.

MAGIC FEATHER #4

The fluttering sound and yellow/white light indicate it's time to add the Feather. Drop this into the Cauldron and stir with your Wand to dissolve. Tap Cauldron 3 times with your Wand when prompted.

FIZZ FLOWER #5

The springtime sound and pink/blue light indicate it's time to add the Fizz Flower.

Add the Flower into the Cauldron and stir with your Wand to dissolve. Tap Cauldron 3 times with your Wand when prompted.

CRYSTAL GEM #6

The crystal sound and purple light indicate it's time to add the Crystal Gem.

Drop this into the Cauldron and stir with your Wand to break up. Tap Cauldron 3 times with your Wand when prompted.

NAMING SCROLL #7

The paper rustling sound and orange light indicate it's time to add the Naming Scroll. Name your Magic Mixie by writing their name on the paper before dropping this into the Cauldron and stirring with your Wand to dissolve. Tap Cauldron 3 times with your Wand when prompted.

The Magic Reveal!

CAUTION: Do not place your hands or Wand inside the Cauldron during this step.

A large volume of real mist will emanate from the Cauldron (this is normal) You might even hear your Magic Mixie start to make noises! After around half a minute your Magic Mixie will miraculously appear in the Cauldron! **Congratulations!** Once the sounds have stopped and the mist has cleared, you may remove your Magic Mixie from the Cauldron by removing the elastic band, rotating anti-clockwise, then pulling it out.

After around 5 "Create Mode" uses, the mist amount will diminish. Only continue to play in "Spell Mode" when this occurs. To use "Create Mode" again, refer to "Mist Refill" page of this manual.

EMPTYING YOUR CAULDRON

Before playing with your Cauldron again, empty all liquid from the previous spell*.

UNSCREWING BASE

Unscrew the bottom half of the Cauldron to pour out liquid, remove any larger items or wash thoroughly.

- Carry the Cauldron carefully to avoid spilling liquid out of the Overflow Hole
- Do not use any chemicals or detergents.
- Do not immerse product in water. To clean the Inner Bowl, wipe with a cloth and ensure the Water Sensor is dried.
- We recommend this is done before starting a new spell or placing the item in storage.
- Reassemble the Cauldron by aligning the triangle indicators as shown.

This process only applies to "Create Mode".
 *Ensure all packaging ties have been removed.

Create Mode (Mist)

Reveal Your Magic Mixie Again

- Align the larger hole on the Mixie's back with the Clip in the centre of the Cauldron. Twist your Mixie clockwise to secure it in place (refer to image below).
- Make sure the Magic Mixie is secured firmly in place and its arms, legs, tail and wings are completely tucked within the Inner Bowl.

TIP: If the Cauldron Clip is not visible, unscrew the bottom half of the Cauldron and complete steps 1 and 2 before screwing the base of the Cauldron in place (refer to "Emptying your Cauldron" page).

Create Mode (Mist)

Using The Gem Case

You can also reveal your own toys using the Gem Case!

- Place each item inside and clip the Gem Case shut.
- Align the Gem Case with the clip in the centre of the Cauldron. Twist your Gem Case clockwise to secure it in place (refer to image below).

TIP: If the Cauldron Clip is not visible, unscrew the bottom half of the Cauldron and complete steps 1 and 2 before screwing the base of the Cauldron in place (refer to "Emptying your Cauldron" page).

RESETTING YOUR CAULDRON

Always ensure the Cauldron is reset before playing.

- Place the Reset Key into the Reset Hole.
- Turn clockwise until the Inner Bowl locks into place.

CAUTION: Water should only be poured into correct side of the Inner Bowl. Adding water to the wrong side will result in no function and may permanently damage the Cauldron.

Spell Mode (No Mist)

You can make your own unique potions and spells (without Mist) by playing in "Spell Mode".

CAUTION: Ensure the Cauldron position has been reset (refer to the "Resetting your Cauldron" page of this manual).

Turn On Cauldron

Fill the Potion bottle to the Fill Line and pour into the top of your Cauldron. The Cauldron will come to life with bubbling and boiling sounds. When you hear the "tap tap tap" prompt, tap the rim of the Cauldron 3 times with your Wand.

NOTE:

- Ensure any water/liquids do not exceed the Fill Line of Cauldron.
- No mist or magic reveal will occur in this mode.
- When finished using "Spell Mode", empty contents of Cauldron over a sink.

***IMPORTANT:** This process only applies to "Spell Mode".

You can keep making your spell for as long as you like!

CAULDRON SLEEP MODE

If you don't tap the Cauldron with the Wand, the "tap tap tap" prompts will gradually become less frequent and the green light will switch off.

After an hour of inactivity, the Cauldron will enter Sleep Mode. It will also do this automatically after successful completion of the "Create Mode".

To reactivate functions and resume play from the beginning:

- Move switch to OFF, then back to "Create Mode (Mist)" or "Spell Mode (No Mist)".



15

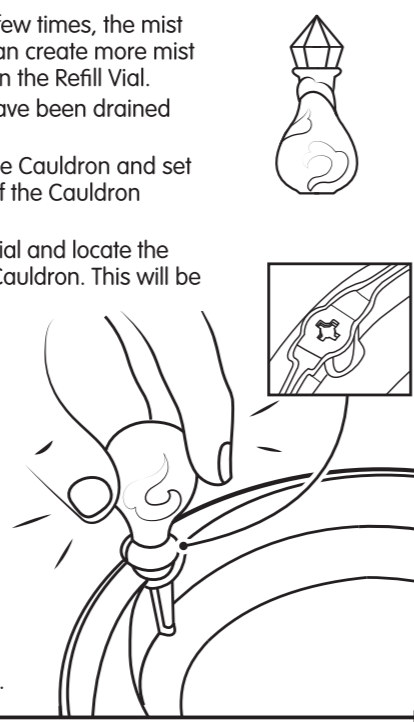
MIST REFILL

After using your Cauldron a few times, the mist effect will be reduced. You can create more mist by refilling with liquid found in the Refill Vial.

- Ensure all water/liquids have been drained from the Cauldron.
- Unscrew bottom half of the Cauldron and set aside. Place the top half of the Cauldron upside-down.

3. Undo the lid on the Refill Vial and locate the cross-shaped hole in the Cauldron. This will be located along the rim of the inner bowl. If you cannot find the hole, you may need to rotate the inner bowl so that the other side can be seen.

- Place the end of the Refill Vial in the hole until it stops and firmly squeeze 3 times. Do not overfill. Wipe up spills with damp cloth.
- Remove the Refill Vial and seal it with the lid.
- Reassemble the Cauldron.



15

TROUBLESHOOTING - CAULDRON

For safety and to avoid any potential malfunction, do not restrict movement of the Inner Bowl of the Cauldron.

I don't want my child to be exposed to the mist emitted by the Cauldron:

Please follow these steps:

- Switch unit to "OFF" position.
- Invert the Cauldron and unscrew base.
- Manually retrieve the Magic Mixie.
- Reattach base.
- Switch Cauldron to "Spell Mode" for play.

Adding water to the Cauldron is not triggering bubbling and boiling sounds:

- Ensure water is being poured into the correct side of the Inner Bowl. Refer to "Resetting your Cauldron" page of this manual.
- Make sure that the Inner Bowl surface is properly wiped clean of any previous spell ingredients, particularly the Water Sensors.

Tapping the Wand on the Cauldron does not advance play to the next stage:

- Make sure the Wand hits the rim of the Cauldron 3 or more times. If you are tapping softly then increase the force of the tap.
- Only tap the Cauldron directly after the "tap, tap, tap" prompt (when there is no Cauldron sound playing).
- Try to match the rhythm of the Prompt sound.
- Battery may be low on the Cauldron. Low battery may not allow full function. Charge battery using USB Charging Cable.

Cauldron is progressing to the next stage of the spell before I tap the Wand on the Cauldron:

- Avoid stirring after the "tap, tap, tap" prompt - the Cauldron may register that you are tapping the Wand to progress. Try to only stir your ingredients when bubbling and boiling sounds are playing.
- Minimise surrounding noise as much as possible. If you do not tap the Cauldron when asked then after a while it will automatically progress to the next stage.

I have used all my ingredients in "CREATE MODE" and nothing happened:

- Please follow the instructions and Spell Book.
- Only use 1 ingredient for each step. The Cauldron is supplied with enough ingredients for a single "Create Mode" play session.
- You can still complete the reveal process by tapping the Cauldron with the Wand at the correct times.
- Ensure the main switch has been placed into "Create Mode".

Cauldron emits an odour and there's little mist generated (in "Create Mode"):

- Switch to "Spell Mode" to avoid running the system without sufficient mist liquid.
 - See "Mist Refill" section of this manual.
- Cauldron no longer produces mist:**
- Cauldron may have run out of mist liquid. You can create more mist by refilling the Cauldron with the Refill Vial.
 - Ensure the Play Mode Switch is on "Create Mode". If the switch is in the "OFF" or "Spell Mode" position, then mist will not be created.
 - Battery may be low on the Cauldron. Low battery may not allow full function. Charge battery using USB Charging Cable.

Cauldron's functions do not match instructions:

- Ensure the Mode Switch is in the correct switch position for your intended play session. You may need to switch "OFF" and then back to "Create Mode (Mist)" or "Spell Mode (No Mist)".
- Cauldron may be in Sleep Mode. Please follow steps in the "Cauldron Sleep Mode" section of this manual.
- Battery may be low on the Cauldron. Low battery may not allow full function. Charge battery using USB Charging Cable.

Water is leaking from Cauldron

- Only apply one full Potion Bottle of water for each "Create Mode" session. Any more than this will drain from Inner Bowl.
- All water must be drained from Cauldron Base at the end of each "Create Mode" play session (refer to "Emptying your Cauldron" section of this manual).
- Ensure both Cauldron Top and Base are properly fastened and sealed.
- Ensure you are playing on a flat, level surface.
- Do not play on carpet or material surfaces.
- Lessen your stirring action.
- Do not allow a child to move or carry the Cauldron when there is water inside.

Reset Key will not turn:

- Cauldron is not already in reset position (water sensors and light side of the bowl is facing up and visible). Reset Key will not turn if reset position is already locked in place.
- Only turn Key in clockwise direction.
- Do not attempt to forcibly turn the Key if you feel high levels of resistance - doing so may break the Key.

- Look inside Cauldron to check for any obstructions that may be prohibiting rotation of Inner Bowl. If there is liquid or another item loose in the bottom area of the Cauldron, then it may be causing a blockage.

I have lost the Reset Key:

- If Reset Key has been lost, you may return the Inner Bowl to the correct position by reaching into the Cauldron and manually rotating until it clicks into position. **CAUTION:** Switch Cauldron to "OFF" position before manually attempting to move Inner Bowl.

Reveal of Magic Mixie or Gem Case is not working:

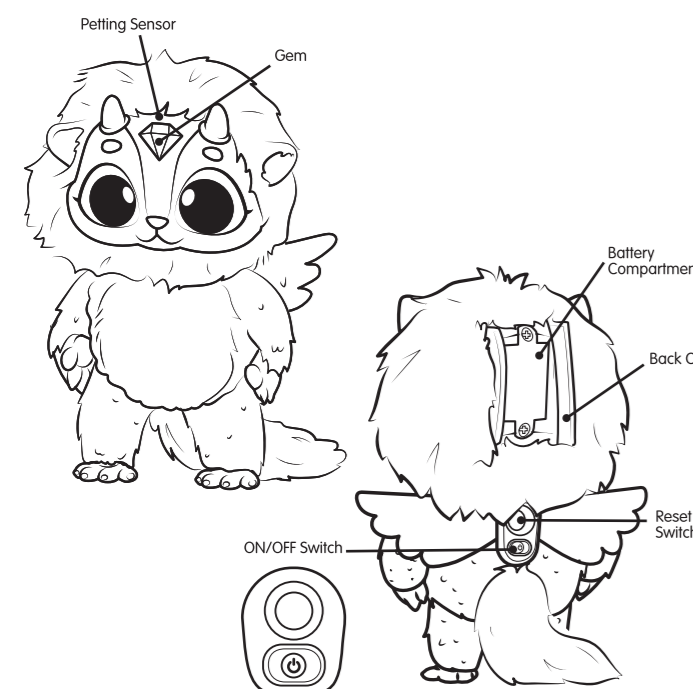
- Battery may be low on the Cauldron. Low battery may not allow full function. Charge battery using USB Charging Cable.
- There may be something blocking the Inner Bowl. Unscrew the bottom half of the Cauldron from the top and check for any obstructions. This will stop the reveal function from working properly.
- Magic Mixie may have detached from under side of Inner Bowl. Refer to "Create Mode (Mist) - Reveal your Magic Mixie again" section of this manual.
- Ensure all elements of your Magic Mixie are tucked/contained within the Inner Bowl. Refer to "Reveal Your Magic Mixie Again" section of this manual.
- Always ensure the Gem Case has been correctly closed - you should hear a click and visually inspect the clip before placing into Cauldron.
- Do not overload the Gem Case. Excessive weight may cause the lid to open when inverted.

Short Battery Life:

- Switch off Cauldron when not in use to preserve battery.

16

YOUR MAGIC MIXIE



17

BATTERIES

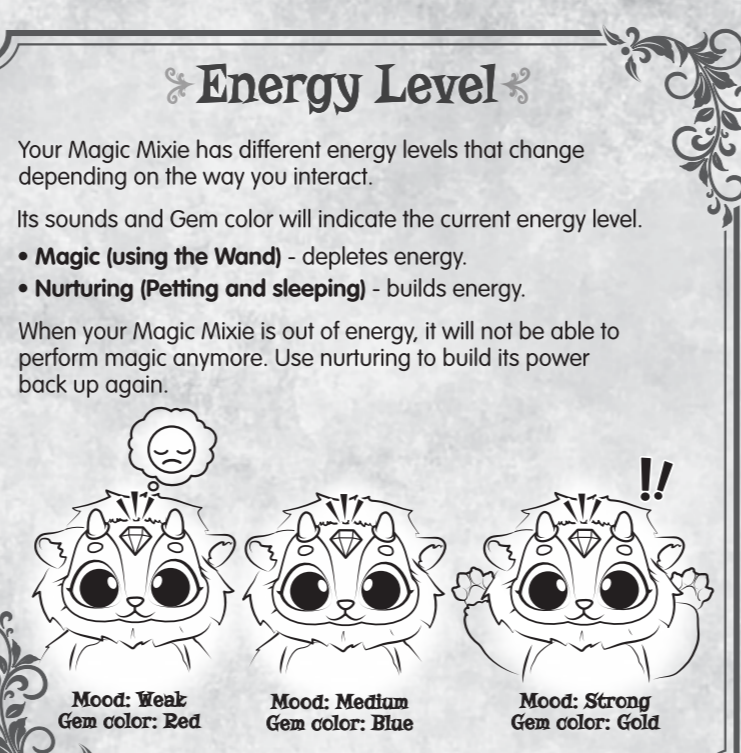
Batteries included, requires 3 x Button cell AG13 (LR44) batteries. Cross head screwdriver (not included) needed to replace batteries.

- Keep batteries out of the reach of children at all times.
- Never put button cell batteries in your mouth for any reason.
- Seek immediate medical attention if a battery is ingested.
- Remove the old battery first and ensure it is correctly disposed or recycled.
- Batteries should be replaced by an adult and inserted observing correct polarity.
- Always check to ensure the compartment lid is correctly sealed and secured before giving the toy to the child.
- Non-rechargeable batteries are not to be recharged.
- Rechargeable batteries are to be removed from the toy before being charged.
- Rechargeable batteries are only to be charged under adult supervision.
- Exhausted batteries are to be removed from the product.
- The supply terminals are not to be short-circuited.
- Batteries are to be removed from the product before long-term storage.
- Do not dispose of batteries in fire.
- Batteries should be recycled or disposed of as per state and local guidelines.
- Use new batteries to obtain best performance.
- Different types of batteries or new and used batteries are not to be mixed.

Help the environment by disposing of your product and batteries responsibly. The wheeled bin symbol indicates that the product and batteries must not be disposed of in the domestic waste, as they contain substances which can be damaging to the environment and health. Please use designated collection points or recycling facilities when disposing of the item or batteries. More information can be found on: <http://www.recycle-more.co.uk> | www.recycle-now.com

WARNING This product contains a Button Cell Battery. A swallowed Button Cell Battery can cause internal chemical burns in as little as two hours and lead to death. Dispose of used batteries immediately and safely. Keep new and used batteries away from children. If you think batteries might have been swallowed or placed inside any part of the body, call your local Poison Information Hotline and seek immediate medical attention.

18



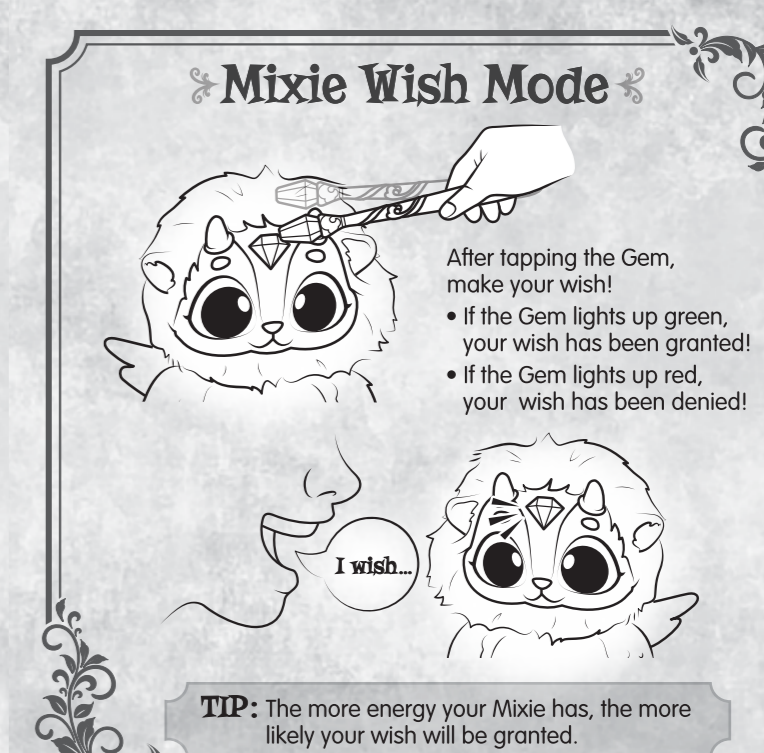
19



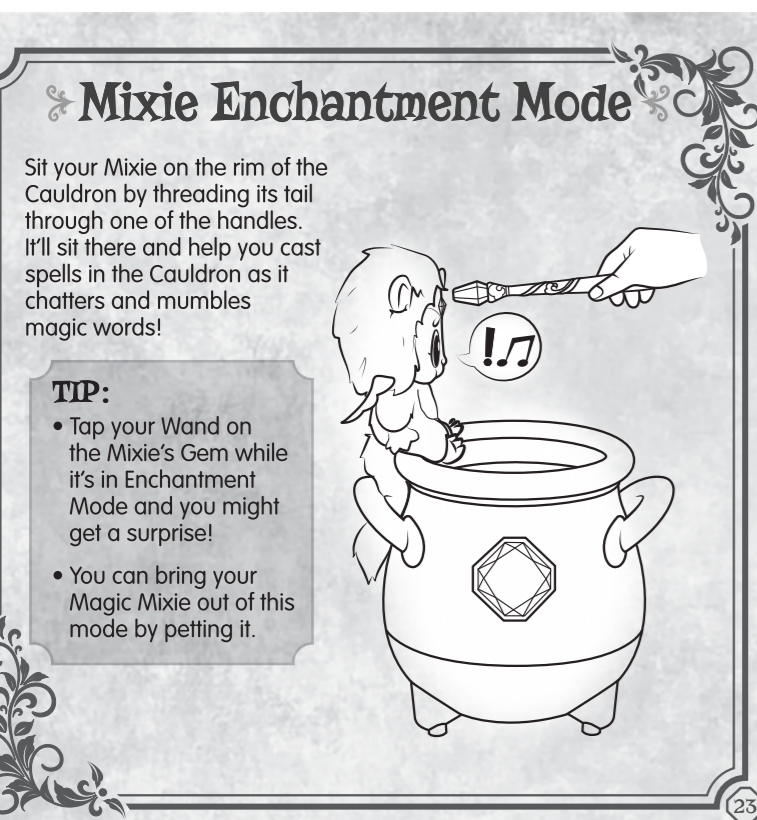
20



21



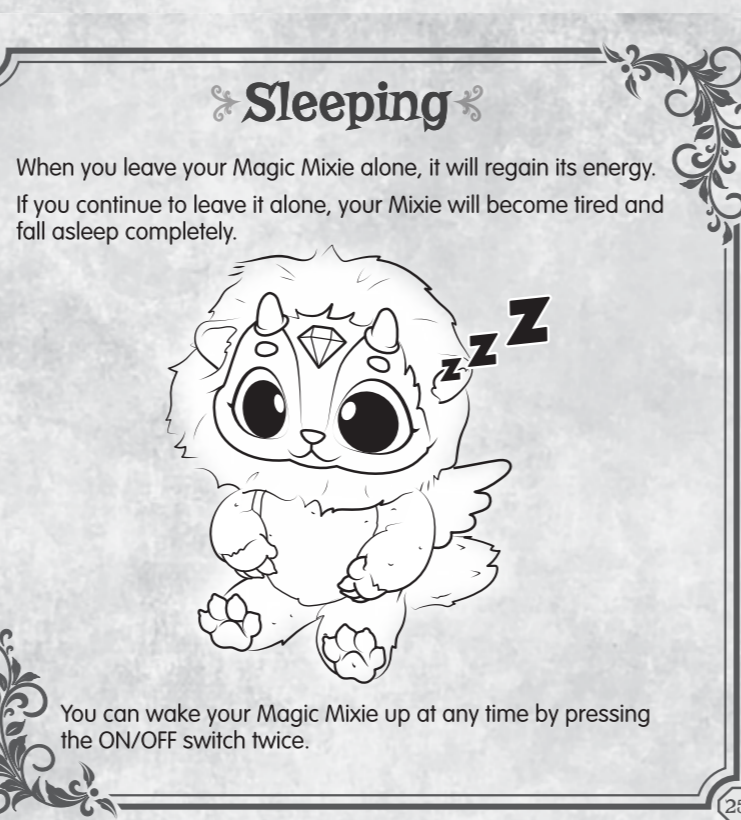
22



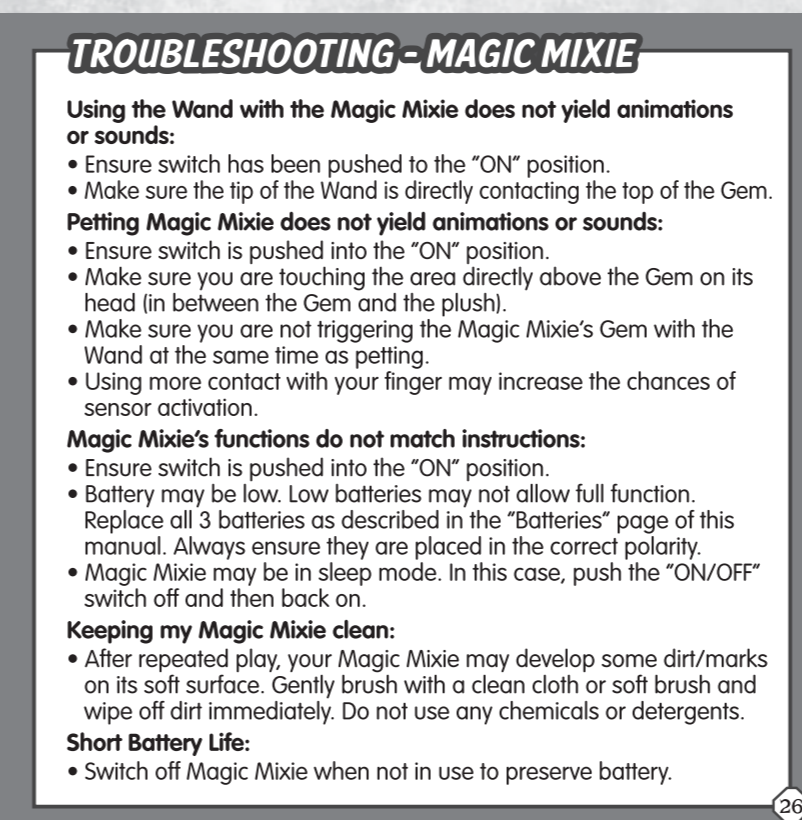
23



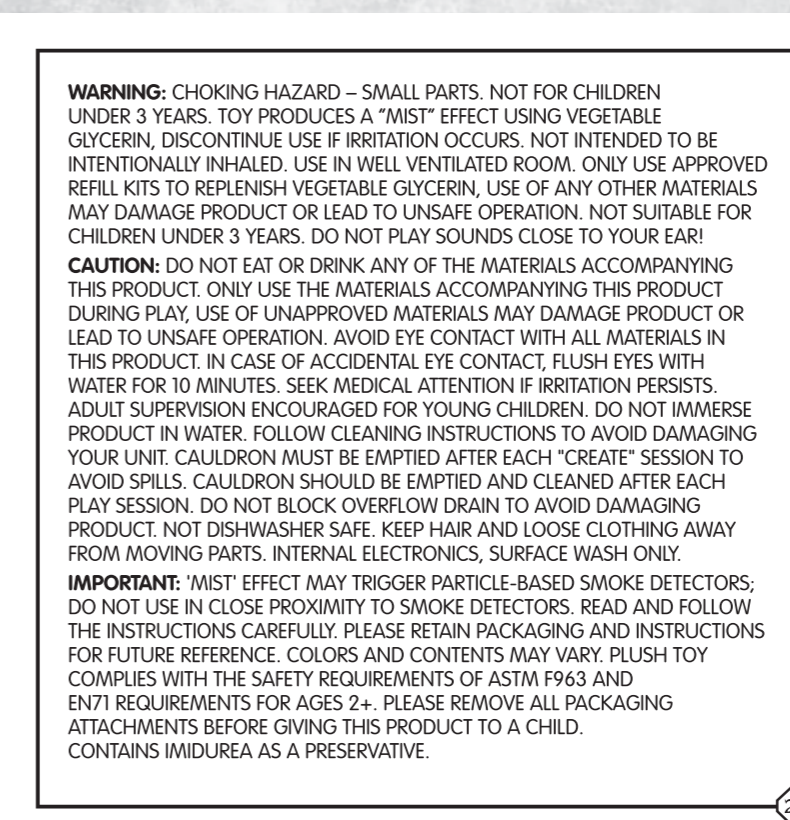
24



25



26



27



28